



QUICK GUIDE TO HEAT METERING

2011

HEAT METERS AND HEAT COST ALLOCATOR

DIRECT HEAT METER CONTECA 7554 SERIES

Tech. Broch.: 01111

- Domestic and central heating users
- Local - centralised reading
- Bus transmission
- MID certified



DIRECT HEAT METER WITH ULTRASOUND CONTECA ULTRA 7557 SERIES

Tech. Broch.: 01208

- Domestic and central heating users
- Local - centralised reading
- Bus transmission
- MID certified



CONTECA TOUCH DATA COLLECTOR 7550 SERIES Tech. Broch.: 01204

- Centralised acquisition of heat and DHW consumptions with bus cable
- Touch-screen
- GSM modem
- M2M SIM card provided by CALEFFI
- Maximum number of users 250



DIRECT HEAT METER FOR SOLAR THERMAL SYSTEMS, CONTECA 75525 SERIES

Tech. Broch.: 01146

- Central users for solar thermal systems
- Local - centralised reading
- Bus transmission

**CALEFFI
SOLAR**



HEAT COST ALLOCATOR MONITOR-100R/RE 7100 SERIES

Tech. Broch.: 01205

- Indirect metering for heating systems with vertical riser distribution
- Double temperature sensor
- Bidirectional wireless communication 868 MHz
- Reading via USB/Radio device and software



USER MODULES

UNIVERSAL USER MODULE, PLURIMOD 7000 SERIES [Tech. Broch.: 01203](#)

- Universal bracketing recessed box
- PLURIMOD module with 2-way - 3-way zone valve
- Fitted for AUTOFLOW®
- CONTECA metering
- Fitted for 3 domestic water outlets



USER MODULE, PLURIMOD 70009 SERIES [Tech. Broch.: 01203](#)

- Recessed box with reversible connections
- PLURIMOD module with 2-way - 3-way zone valve
- Fitted for AUTOFLOW®
- CONTECA metering
- Fitted for 2 domestic water outlets
- Distribution manifold with 2 to 8 outlets
- For traditional heating systems



USER MODULE, PLURIMOD 70006/70008 SERIES

- Recessed box with reversible connections
- PLURIMOD module with 2-way - 3-way zone valve
- Fitted for AUTOFLOW®
- CONTECA metering
- Fitted for 2 domestic water outlets
- Distribution manifold with 2 to 7 outlets, with or without micrometric valves
- For radiant panel heating systems



DOUBLE USER UNIVERSAL MODULE PLURIMOD DUPLEX 7000 SERIES [Tech. Broch.: 01113](#)

- Recessed box with reversible connections
- PLURIMOD modules with 2-way - 3-way zone valve
- Fitted for AUTOFLOW®
- CONTECA metering
- Fitted for 6 domestic water outlets



RECESSED MOUNTED USER SATELLITES

USER SATELLITE WITH RETURN TEMPERATURE CONTROL, SAT22 SERIES

Tech. Broch.: 01206

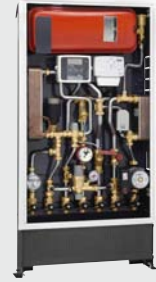
- Recessed box
- CONTECA metering
- 50 kW DHW exchanger
- AUTOFLOW®
- Differential pressure control valve
- Connections at the bottom



USER SATELLITE WITH SEPARATE WATER SYSTEMS SAT32 SERIES

Tech. Broch.: 01207

- Recessed box
- CONTECA metering
- 50 kW DHW exchanger
- 15 kW heating exchanger
- 7,5 litre expansion vessel
- High-efficiency variable-speed pump
- Connections at the bottom



WALL-MOUNTED USER SATELLITES

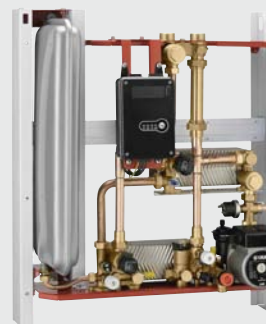
USER SATELLITE SATK20 SERIES

- Wall-mounted box
- Fitted for metering
- 30 kW – 40 kW DHW exchanger
- 2-way heating line modulating valve
- High / low temperature controller
- Pump with safety by-pass
- 2-way DHW line modulating valve
- Connections at the top/bottom



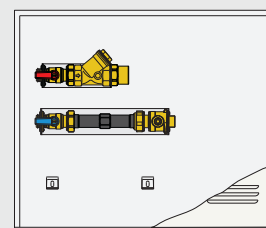
USER SATELLITE WITH SEPARATE WATER SYSTEMS SATK30 SERIES

- Wall-mounted box
- Fitted for metering
- 30 kW – 40 kW DHW exchanger
- 15 kW heating exchanger
- 2-way heating line modulating valve
- High / low temperature controller
- Pump with safety by-pass
- 7,5 litre expansion vessel / safety valve
- 2-way DHW line modulating valve
- Connections at the top/bottom



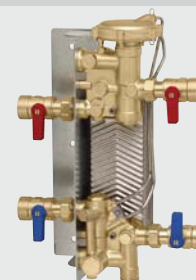
COMPACT MEASUREMENT BOX 789 SERIES

- Recessed wall box
- Fitted for CONTECA metering
- Fitted for 1 domestic water outlet



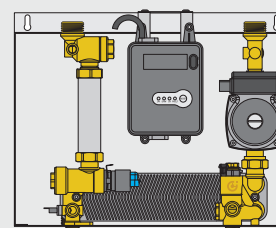
TWO-WAY SATELLITE FOR DHW PRODUCTION, MECHANICAL VERSION SATK101 SERIES

- Wall-mounting bracket
- 35 kW DHW exchanger
- Primary differential pressure control valve



TWO-WAY SATELLITE FOR DHW PRODUCTION, ELECTRICAL VERSION SATK102 SERIES

- Wall-mounting bracket
- 40 kW – 50 kW - 70 kW DHW exchanger
- Electronic controller
- 2-way primary modulating valve
- Pump
- Connections at the top/bottom



CALEFFI S.p.A · S.R.229, N.25 · 28010 Fontaneto d'Agogna (NO) · Italy · Tel. +39 0322 8491 · Fax +39 0322 863723
· www.caleffi.com · info@caleffi.com ·

© Copyright 2011 Caleffi